

Regional Bias in the OLR Estimated from the Geostationary Orbit

Nicolas Clerbaux, Cédric Bertrand, Steven Dewitte, Luis Gonzalez, Alessandro Ipe, Bogdan Nicula
 Royal Meteorological Institute of Belgium (RMIB), Department of Observations, Section Remote Sensing from Space,
 gerb@oma.be http://gerb.oma.be

Abstract

The analysis of one year of CERES–Terra data provides evidence that the longwave radiation escaping from the atmosphere exhibits significant variability according to the azimuthal angle of observation. A regional analysis of this variability shows that the anisotropy in azimuth is maximum over mountain and desert areas and under cloud-free conditions. A relative difference between North and South views of about 5% in annual average is observed over the Himalayan region. We think that the remote sensing community should be aware of this variability, in particular when analyzing infrared data provided by instruments on geostationary orbits. Indeed, in this case, the azimuthal anisotropy may lead to systematic overestimation of the outgoing longwave radiation and to biases on retrieved quantities such as the surface temperature.

1 Introduction

The observation of the Earth in an atmospheric infrared window (such as 8 – 14 μm) is widely used to quantify surface properties (e.g. temperature) and processes (e.g. evapotranspiration). Broadband observation of the longwave radiation (such as from 4 to 50 μm) is used to estimate the Outgoing Longwave Radiation (OLR) which is one of the components of the Earth's radiation budget. The measured narrowband and broadband radiance at the Top Of Atmosphere (TOA) is usually supposed to be dependent on the Viewing Zenith Angle (VZA) and not on the Viewing Azimuth Angle (VAA). The dependency in VZA is explained [e.g. Otterman, 1997] as a result of the absorption/emission by the atmospheric constituents along an optical path that increases with the VZA as well as by the surface emission according to this angle. Azimuthal variability of the thermal emission just above vegetated surfaces has been described in various studies and explained as a result of differential solar warming of the vegetation structure [e.g. Kimes, 1981]. Logically, the anisotropy at the surface level should propagate up to the TOA albeit reduced due to the atmospheric constituents and clouds. Lipton and Ward [1997] have simulated the anisotropy for mountain areas in North America using digital elevation data and an atmospheric model. They have shown that the variation of the incoming solar flux with the surface slope can lead to large biases in satellite retrieval of surface temperature. Using simultaneous IR radiances from GOES-8, -9 and -10 satellites, Minnis and Khaiyer [2000] were able to observe the anisotropy in the azimuth direction. They have shown that the phenomenon is closely correlated with surface slopes, as suggested by Lipton and Ward. Nevertheless, using only observations from geostationary satellites (i.e. located over the Equator) the Minnis and Khaiyer [2000] analysis may underestimate the magnitude of the azimuthal anisotropy. On the other hand, this approach allows an interesting analysis of the diurnal cycle of it.

The data and methodology used in our study allow to estimate the annual average of the azimuthal variability at regional scale. In addition, the study provides a quantitative relationship between the anisotropy in the atmospheric infrared window and the one observed for broadband longwave radiance.

2 Data and Methodology

Our study is based on 12 months of the Cloud and the Earth's Radiant Energy System (CERES) [Wielicki *et al.*, 1996] data from the Terra spacecraft. The satellite observations are done at Local Time (LT) close to 10:30 and 22:30. The CERES instrument is a 3-channels broadband radiometer providing accurate measurement of shortwave (0.3 – 5 μm), longwave (5 – 50 μm) and infrared window (8 – 12 μm) radiances. There are two identical CERES instruments aboard Terra. One instrument is operating in a cross-track scan mode and the other in a biaxial scan mode. For the analysis, 314 days of CERES–Terra data in biaxial scan mode are used, ranging from November 2000 to November 2001. This amounts to about $1.6 \cdot 10^9$ observations, half during the morning pass and half during the evening pass. According to the VAA, each CERES observation of the Earth is classified as observation *from the South* or *from the North*. An observation *from the South* corresponds to a viewing azimuth VAA in the range $90^\circ - 270^\circ$. The averaged CERES longwave and infrared window radiances measured *from the South* L_S and *from the North* L_N are evaluated on a $1^\circ \times 1^\circ$ box grid. For the data used, there are about 13 000 *South* and *North* observations for each box and instrument channel. The difference ($L_S - L_N$) between these two radiances is a simple indicator of the anisotropy in azimuth. In the following, the relative difference Δ , expressed in percent, will be used as the measurement of the anisotropy:

$$\Delta = \frac{L_S - L_N}{(L_S + L_N)/2} \quad (1)$$

3 Results

Figure 3a shows the regional variation of Δ for the CERES infrared window channel for the morning orbit (10:30 LT). This figure provides evidence that, on average, the anisotropy in azimuth Δ is positive in the Northern hemisphere and negative in the Southern. The largest anisotropy is observed over mountain and desert areas like the Himalayan region, the Alps, the Atlas, the North and South American Cordilleras, the South African and Australian deserts. For land surface, the typical annual average anisotropy at 10:30 LT ranges between 1% and 5%. Applying the same analysis on data from the evening orbit at 22:30 does not produce these areas of large azimuthal anisotropy over mountains or deserts. The anisotropy appears then to be caused by a difference in the daytime solar warming of North and South faces of the surface. Regional anisotropy for the CERES longwave channel is given in Figure 3b. Compared to the infrared window case, the anisotropy is here reduced due to the atmosphere absorption/emission in spectral regions outside of the atmospheric windows. The scatter plot on Figure 1 shows the correlation between

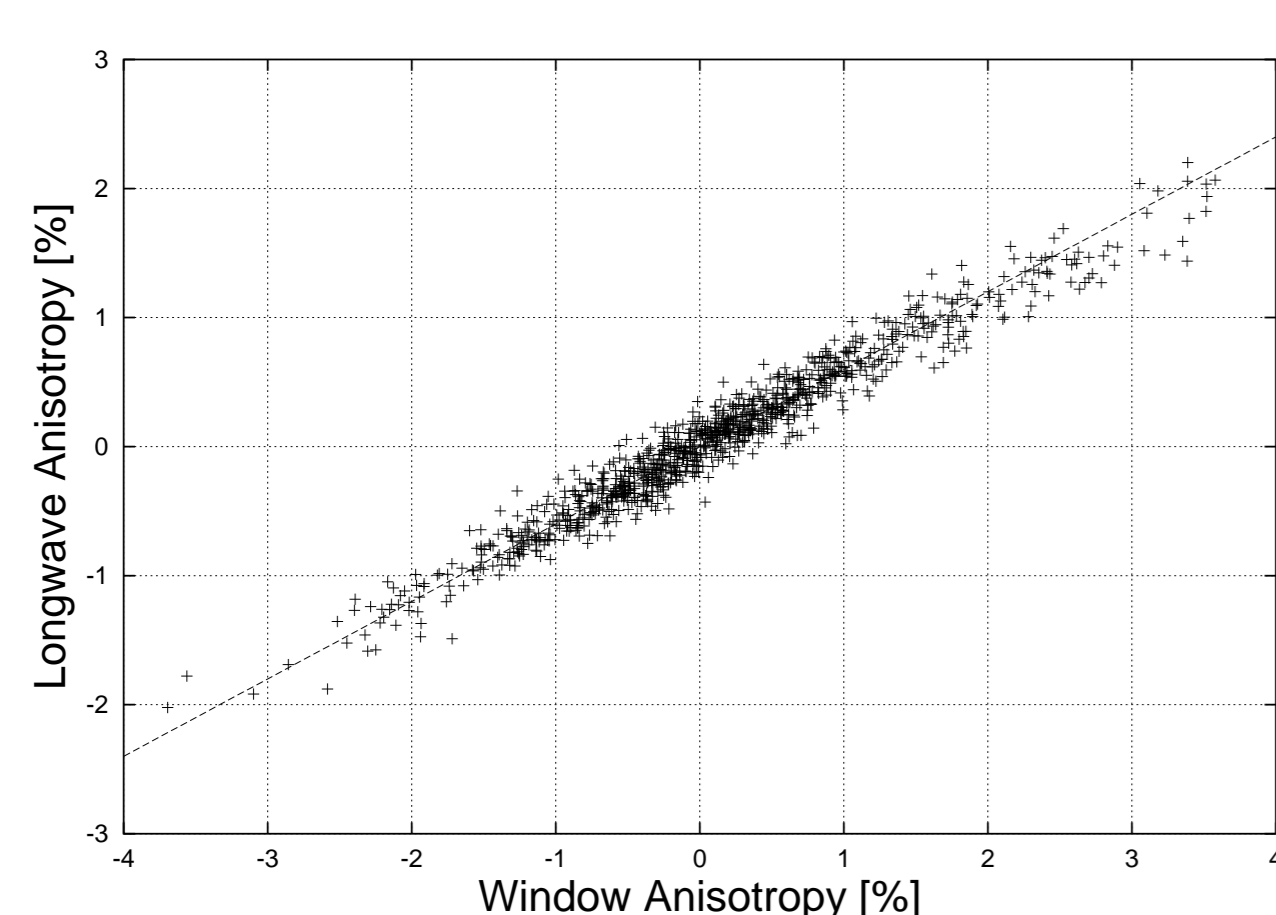


Figure 1: Scatter plot of the longwave versus the window anisotropies. Each dot corresponds to a 1 by 1 degree box. The correlation coefficient is 0.978 and the RMS error is 0.14%.

broadband and window anisotropy. On this graph, the anisotropy for broadband longwave radiance appears to be roughly 57% of the one in the infrared window. To study the influence of the cloud cover on the anisotropy, the ERBE scene identification is used. Figure 3c shows the regional variation of Δ when only the CERES clear or partly cloudy measurements are used to evaluate the *South* and *North* radiances in Equation 1. The main result here is that, for cloud free conditions, the infrared radiance does not exhibit azimuthal anisotropy over the ocean. This is a valuable result for the remote sensing of the sea surface temperature. In Figure 3c, too high values of the azimuthal anisotropy appear to be measured over the ice packs near Antarctica. This is probably due to the fact that over reflective surfaces, such as ice and snow, the ERBE scene identification relies mainly on the CERES longwave measurement and is then correlated to the signal we want to retrieve.

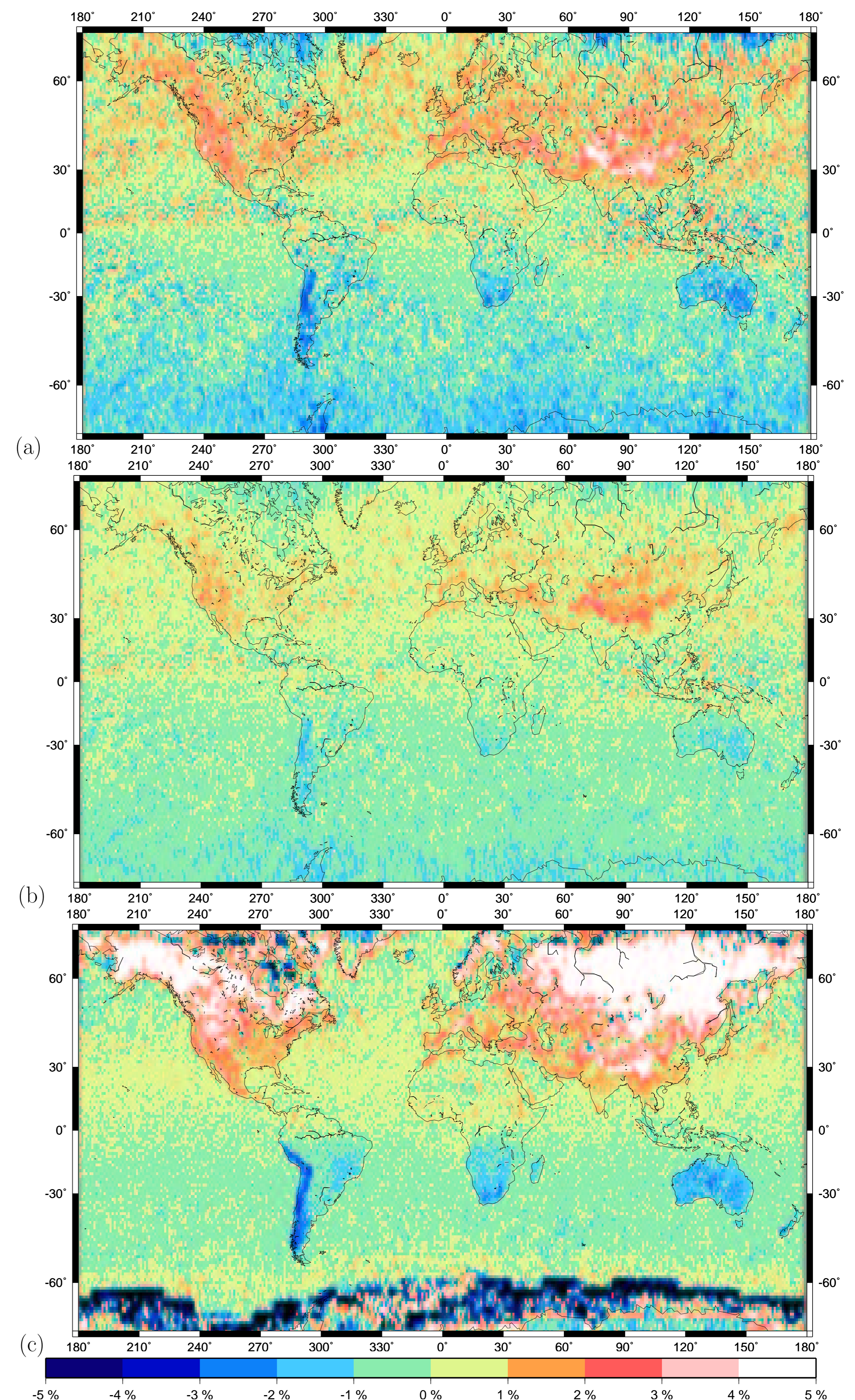


Figure 2: Annual average of the azimuth anisotropy Δ [%] for the CERES: (a) infrared window channel, (b) broadband longwave channel and (c) infrared window channel under clear and partly cloudy conditions only.

4 Conclusions

Our simple statistical analysis of CERES–Terra data demonstrates a significant dependency in azimuth for the thermal radiance field at the TOA, mainly over arid and mountain regions. The regional analysis has only been done for the 10:30 and 22:30 local time. The data from the CERES instruments on the Aqua satellite will allow the same kind of analysis for 4:30 and 16:30 local time. Since in the near future, new Earth observation capabilities will be available from geostationary orbits, one should be aware of this anisotropy in azimuth when using thermal infrared measurements. Indeed, from a geostationary orbit, the Northern hemisphere is always observed *from the South* and the opposite is true for the Southern hemisphere. As an example, Meteosat Second Generation which is planned to be launched in summer 2002 will carry the Geostationary Earth Radiation Budget (GERB) instrument. The data processing for the GERB instrument (mainly estimation of the fluxes from the directional measurements) should take into account this azimuthal anisotropy to avoid overestimation of the Outgoing Longwave Radiation over the arid and mountainous areas.

References

- [1] Kimes, D.S., Azimuthal radiometric temperature measurements of wheat canopies, *Appl. Opt.*, 20, 1119–1121, 1981.
- [2] Lipton, A.E. and Ward, J.M., Satellite-view biases in retrieved surface temperature in mountain areas, *Remote Sens. Environ.*, 60, 92–100, 1997.
- [3] Minnis, P. and Khaiyer, M.M., Anisotropy of Land Surface Skin Temperature Derived from Satellite Data, *J. Appl. Meteor.*, 39, pp 1117–1129, 2000.
- [4] Otterman, J., Starr, D., Brakke, T., Davies, R., Jacobowitz, H., Mehta, A., Chéry, F. and Prabhakara, C., Modeling Zenith-Angle Dependence of Outgoing Longwave Radiation: Implication for Flux measurements, *Remote. Sens. Environ.*, 62, 90–100, 1997.
- [5] Wielicki, B. A., Barkström, B. R., Harrison, E. F., Lee III, R. B., Smith, G. L. and Cooper, J.E., Clouds and the Earth's Radiant Energy System (CERES): An Earth Observing System Experiment, *Bull. Amer. Meteorol. Soc.*, 77, 853–868, 1996.

Acknowledgment

We are grateful to the Atmospheric Sciences Data Center at NASA Langley Research Center for providing the CERES data used in this study. The work was supported by the Belgian Science Policy Office (DWTC/SSTC).