

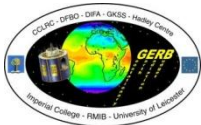
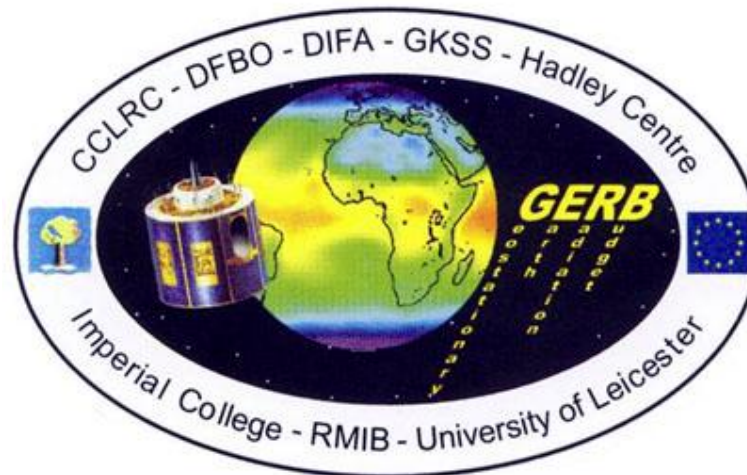
# RMIB GERB Processing (RGP)

## Status report – 33<sup>rd</sup> GIST

Nicolas Clerbaux, Alessandro Ipe, Patrick Vandermeulen, Almudena Velazquez, Edward Baudrez, Stijn Nevens, Ilse Decoster, Steven Dewitte, Manon Urbain

email: [gerb@oma.be](mailto:gerb@oma.be)

web pages : <http://gerb.oma.be>



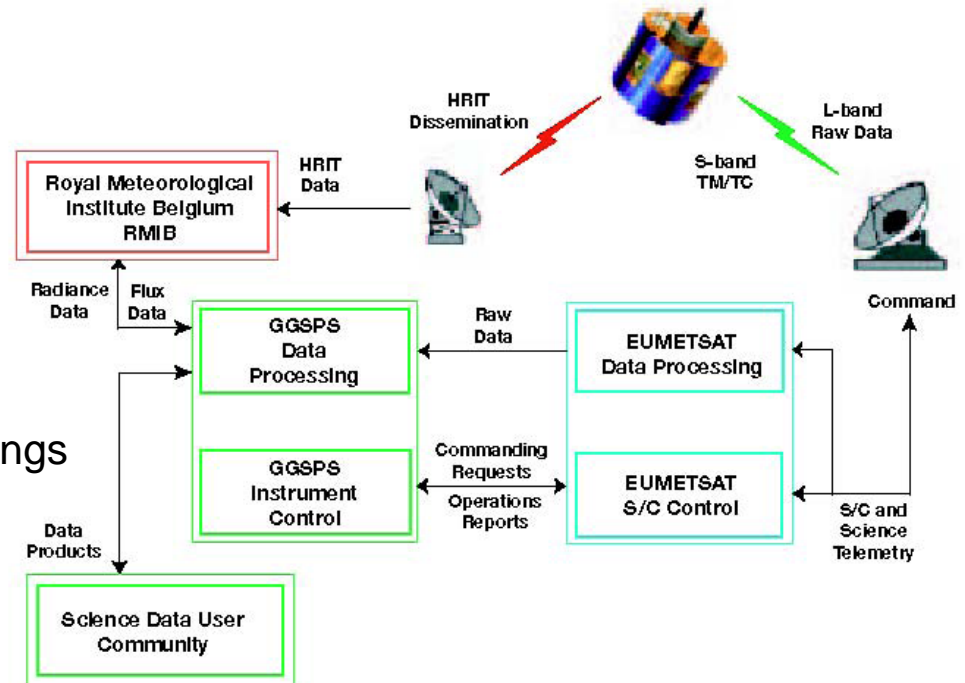
# RGP Overview

## Inputs

- GERB level 1.5 from RAL
- SEVIRI level 1.5 from EUM

## Processings

- LW separation
- Unfiltering
- Scene identification
- ADMs
- Various spatial and temp. processings
  - to combine GERB and SEVIRI
  - tuning of the geolocation
  - resolution enhancement

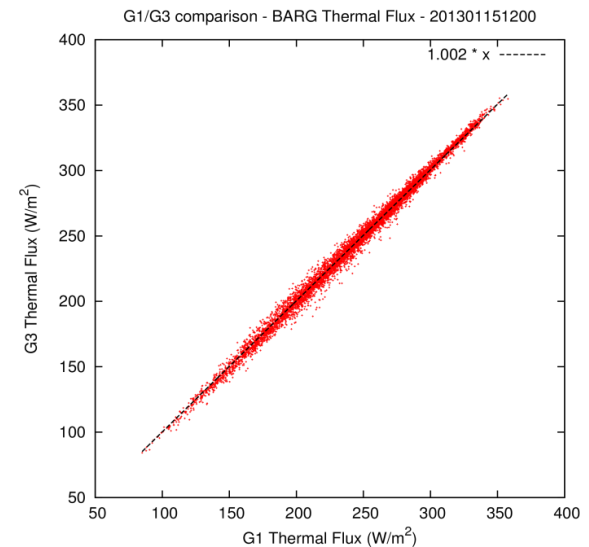
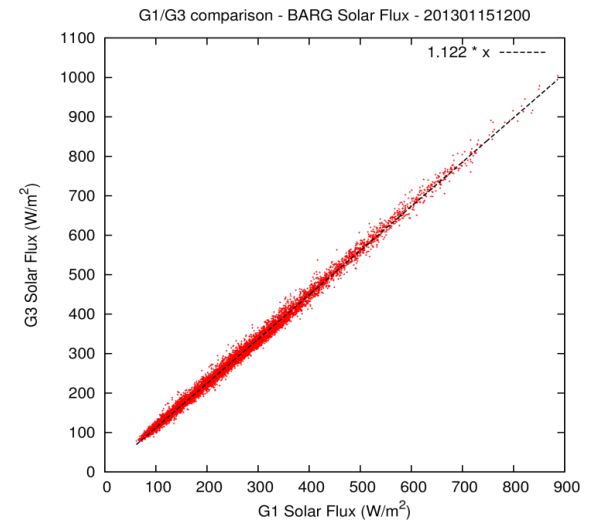


## Outputs

- Level 2 solar and thermal fluxes at TOA
- 3 formats:
  - ARG: Averaged Rectified Geolocated (45km, 17', no correction of PSF)
  - BARG : Binned Averaged Rectified Geol. (45km, 15', PSF corrected)
  - HR : High Resolution (9km, 15', PSF corrected)

# RMIB GERB Processing status

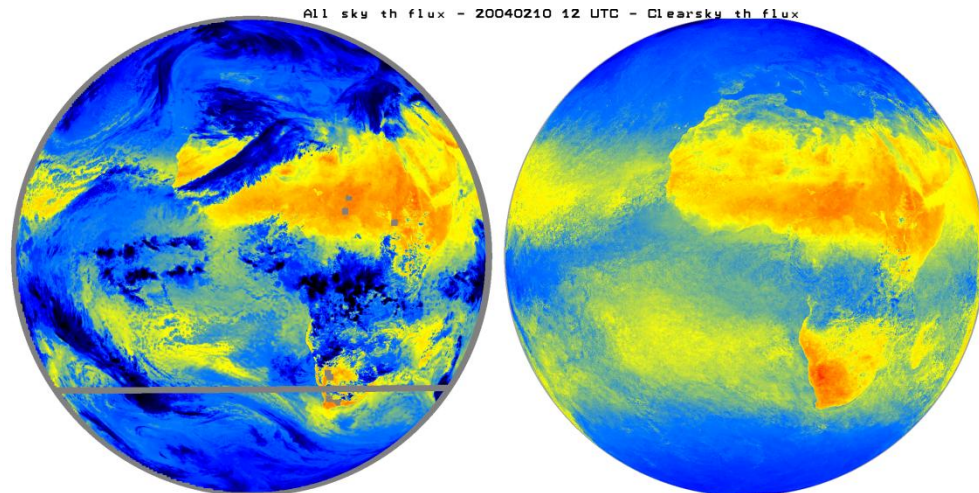
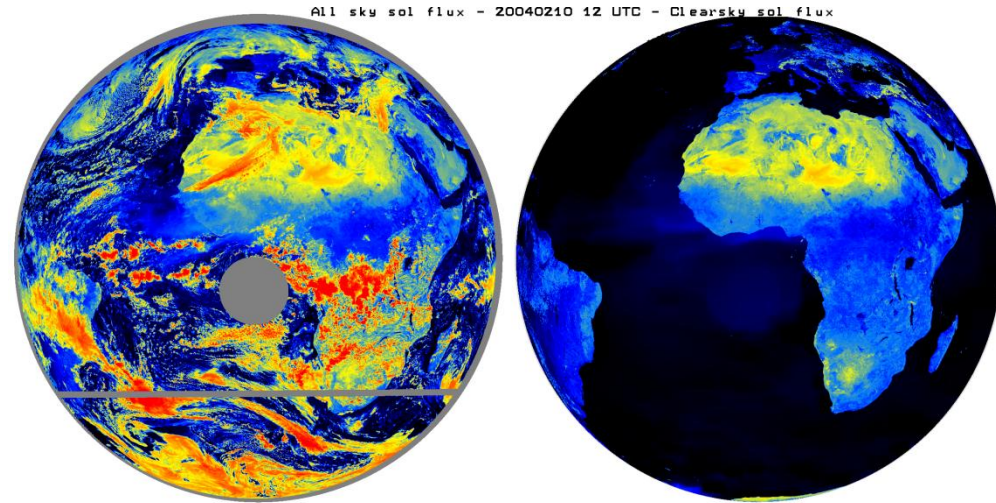
- **G1\_SEV2:** GERB-1 remained “prime” as long as possible. Data processed until 13<sup>th</sup> Feb. 2013 but not (yet) edition during (and after) the move (17 Jan. 2013 onward).
- **G3\_SEV3:** processed and data distributed as “CalVal” (V003 was used), see <ftp://gerb.oma.be> in directory Archive/G3\_CalVal (+README) until failure of GERB-3 on 27 April 2013.
- **GL\_SEV3 :** generated without significant problem except a SEVIRI decontamination 1-9 July 2013 (Met-8 took over). Also spacecraft command problem on 18 August 2013 affecting 13 repeat cycles.
- Back to GERB1 -> see **G1\_SEV3 presentation**
- Activities toward **BARG and HR release** -> see *Edward’s presentation* (“filling”)
- Activities toward **GERB ED02** data record -> see *Helen’s presentation*
- Software/ Hardware / FTP status -> see *Alessandro presentation*



# RMIB GERB / CMSAF activities status

- **Climate Monitoring SAF** activities:
  - SEVIRI/GERB dataset including clear sky fluxes (see illustration)  
→ We think several interests for the GERB project (clear sky fluxes, aging, ...)  
-> See presentation on Friday
  - MVIRI/SEVIRI/GERB dataset
  - MSG/SEVIRI AOD dataset
- New **EarthCARE** « CLARA » activities : RMIB working on
  - BBR unfiltering
  - BBR LW radiance-to-flux conversion
  - Mostly software delivery activities

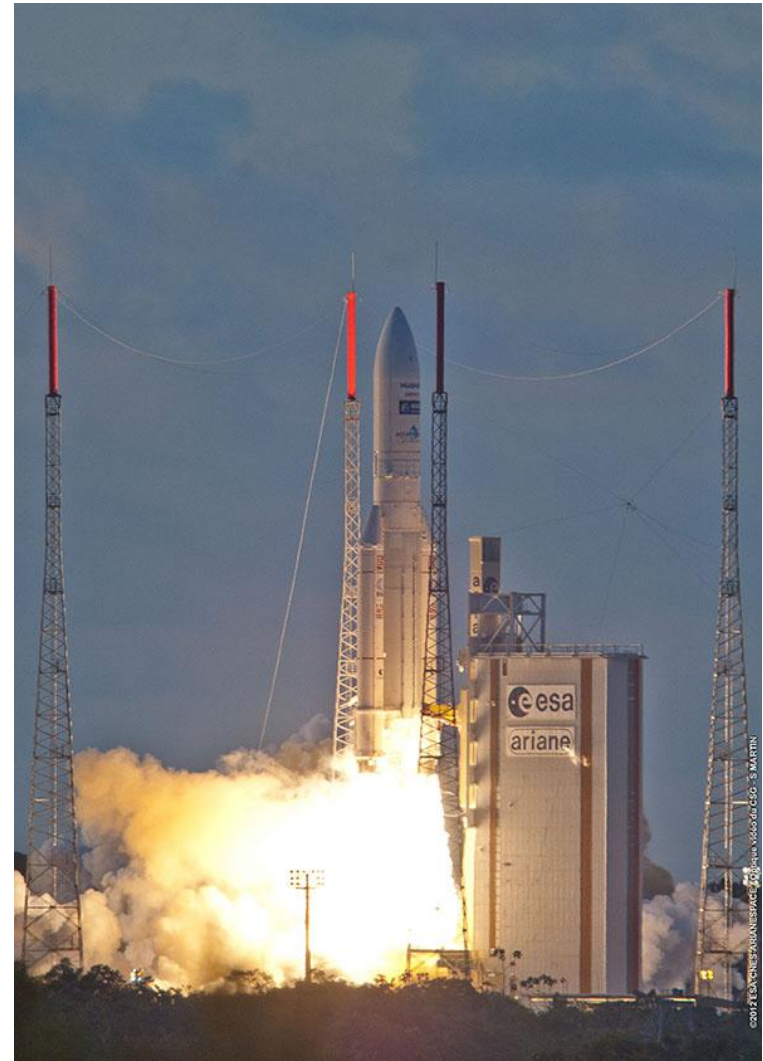
See presentation of Florian Turnow (FUB) on Friday

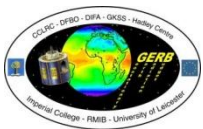




# Future activities

- GERB Edition-2
- BARG and HR release
  - Complete the G2 and G1 reprocessing
  - Visual QA including stray light flagging
  - Reprocess CM SAF dataset and validation activities
- G1\_SEV3
  - Try to issue a LW products asap
  - Reprocess 2013-2014
- Preparation to GERB-4 processing
- Try to submit something for Ops4MIPS





# Software / Hardware / FTP status

- Reprocessing BARG and HR ongoing speed « only » 1/12, data still in HDF5 but with internal compression activated
- Hardware ready to process ED02
- NetCDF routines ready to produce GERB level 2/3
- New FTP server on virtual machine -> no need anymore to mirror the GERB archive on the FTP (caused several short outages last month)
- New GERB file server on « glusterfs » makes possible to keep SEVIRI archive on-line.
- MSG/SEVIRI reception switch to DVB-S2 ongoing
  - 3 DVB-S2 systems ordered and received
  - 1 installed, 1 not working, 1 spare
  - Should be finalized for end 2014
- Use of ECMWF super-computer for LUT generation, possibility to use Center's facilities for some heavy SEVIRI processing (LDA)

